



***Performance Under Pressure***

PARTS LIST FOR  
***CWC-4005/5004/5005/6004-2MGH***  
(AFTER SERIAL #10230792)

ENGINE OIL GRADE:	SAE10W-30
ENGINE OIL CAPACITY:	54 oz.
PUMP OIL GRADE:	Mi-T-M #AW-4085-0016
PUMP OIL CAPACITY:	31 oz.
PRESSURE NOZZLE SIZE FOR	
CWC-4005-2MGH	5.0
CWC-5004-2MGH	3.5
CWC-5004-2MGH	4.0
CWC-6004-2MGH	3.0

This Parts Listing has been compiled for your benefit. You can be assured your Mi-T-M Cold Water Pressure Washer was constructed and designed with quality and performance in mind using over 25 years experience in the pressure washer business. Each component has been rigorously tested to insure the highest level of acceptance.

The contents of this Parts Listing are based on the latest product information available at the time of publication. Mi-T-M reserves the right to make changes in price, color, materials, equipment, specifications or models at any time without notice.

### **WARNING**

THIS IS A PROFESSIONAL HIGH PRESSURE, COLD WATER PRESSURE WASHER. CAUTION SHOULD BE OBSERVED WHEN USING OR REPAIRING THIS UNIT! READ AND FOLLOW THE SAFETY WARNINGS LISTED BELOW BEFORE ATTEMPTING ANY REPAIRS ON THIS PRESSURE WASHER!

### **SAFETY WARNINGS**

1. NEVER alter or modify the equipment. Be sure any accessory items and system components being used will withstand the pressure developed. Use only genuine Mi-T-M parts for repair of your pressure washer. Failure to do so can cause hazardous operating conditions and will VOID warranty.
2. NEVER make adjustments on machinery while the unit is connected to the power source. Turning over the machinery by hand during adjustment or cleaning might start the machinery, causing serious injury to the operator.
3. Know how to stop and bleed pressures quickly. Be thoroughly familiar with controls.
4. Before servicing the unit, turn unit off, relieve the water pressure and allow the unit to cool down. Do not make repairs while the unit is running. Service in a clean, dry, flat area.
5. After testing the machine, DO NOT leave the pressurized unit unattended. Shut off the unit and release trapped pressure before leaving.

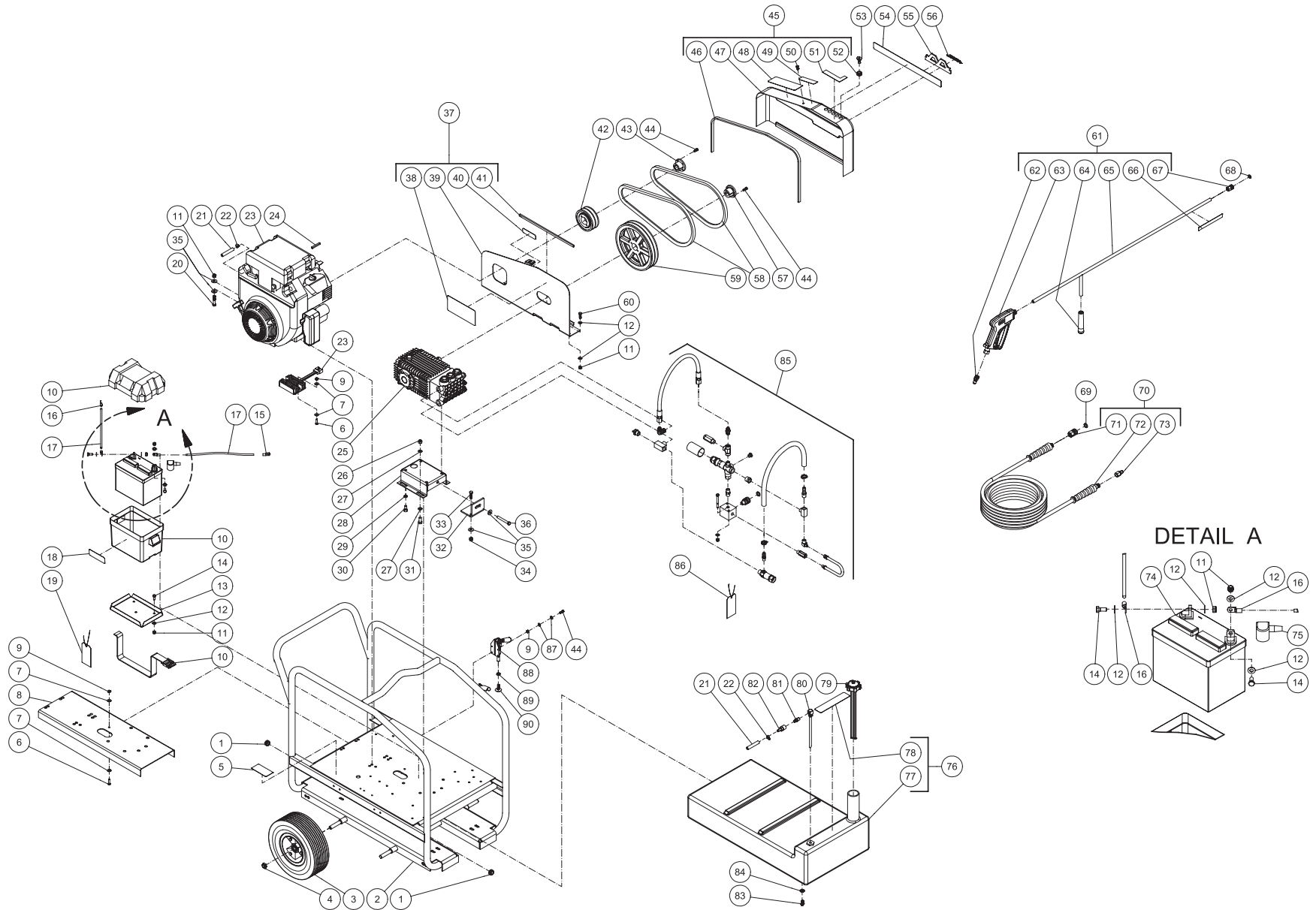
### **Table of Contents**

<b>SPECIFICATIONS.....</b>	<b>3</b>
<b>FRAME ASSEMBLY FOR CWC-4005-2MGH (AFTER SERIAL #10230792).....</b>	<b>4</b>
<b>FRAME ASSEMBLY FOR CWC-5004-2MGH (AFTER SERIAL #10230792).....</b>	<b>6</b>
<b>FRAME ASSEMBLY FOR CWC-5005-2MGH (AFTER SERIAL #10230792).....</b>	<b>8</b>
<b>FRAME ASSEMBLY FOR CWC-6004-2MGH (AFTER SERIAL #10230792).....</b>	<b>10</b>
<b>PLUMBING ASSEMBLY (CWC-4005/5004/5005-2MGH).....</b>	<b>12</b>
<b>PLUMBING ASSEMBLY (CWC-6004-2MGH).....</b>	<b>14</b>
<b>PUMP ASSEMBLY (3-0261).....</b>	<b>16</b>
<b>PUMP ASSEMBLY (3-0262).....</b>	<b>18</b>
<b>UNLOADER ASSEMBLY (8-0522).....</b>	<b>20</b>
<b>UNLOADER ASSEMBLY (8-0373).....</b>	<b>22</b>
<b>GUN ASSEMBLY (16-0343).....</b>	<b>24</b>
<b>GUN ASSEMBLY (16-0421).....</b>	<b>26</b>
<b>HONDA ENGINE ASSEMBLY (851-0307).....</b>	<b>28</b>
<b>HONDA ENGINE ASSEMBLY (851-0357).....</b>	<b>30</b>

## SPECIFICATIONS

MODEL NUMBER	CWC-4005-2MGH	CWC-5004-2MGH	CWC-5005-2MGH	CWC-6004-2MGH
<b>Operating Pressure (PSI/Bar):</b>	4000/276	5000/344.7	5000/344.7	6000/413.6
<b>High Pressure Nozzle:</b>	5.0	3.5	4.0	3.0
<b>Water Volume (GPM/lpm):</b>	5.0/18.9	4.0/15.1	4.5/17.0	3.7/14
<b>Engine:</b>	Honda			
Horsepower	20.0		24.0	
Engine Type	4 Stroke, Overhead Valve, V-Twin			
Oil Type	SAE10W-30			
Oil Capacity (oz./liter)	54/1.6			
Low Oil Protection	Oil Alert™			
Fuel Type	Unleaded Gasoline 86 Octane Minimum			
Fuel Capacity (gal./liter)	11.5/43.5			
Starting	Electric Start			
Maximum No Load RPM	3600 (+/- 100) RPM			
Thermal Relief Valve	Relieves heated water during unloader bypass stage			
<b>Pump:</b>	Belt Driven, Oil Bath, Triplex Piston			
Oil Type	Mi-T-M Pump Oil #AW-4085-0016			
Oil Capacity (oz./liters)	31.0/.92			
Plungers	Ceramic			
Manifold	Forged Brass			
Valves	Stainless Steel			
Unloader	Preset			
<b>Unit Net Weight (lbs/Kg)</b>	378/171.5		388/176	401/182
<b>Unit Shipping Weight (lbs/Kg)</b>	501/227		511/232	480/218
<b>Unit Net Dimension (in/cm)</b>	43Lx27.75Wx36H/109Lx70.5Wx91.5H			
<b>Unit Shipping Dimension (in/cm)</b>	46.5Lx31.5Wx48.5H/118Lx80Wx123H			

# FRAME ASSEMBLY FOR CWC-4005-2MGH (AFTER SERIAL #10230792)

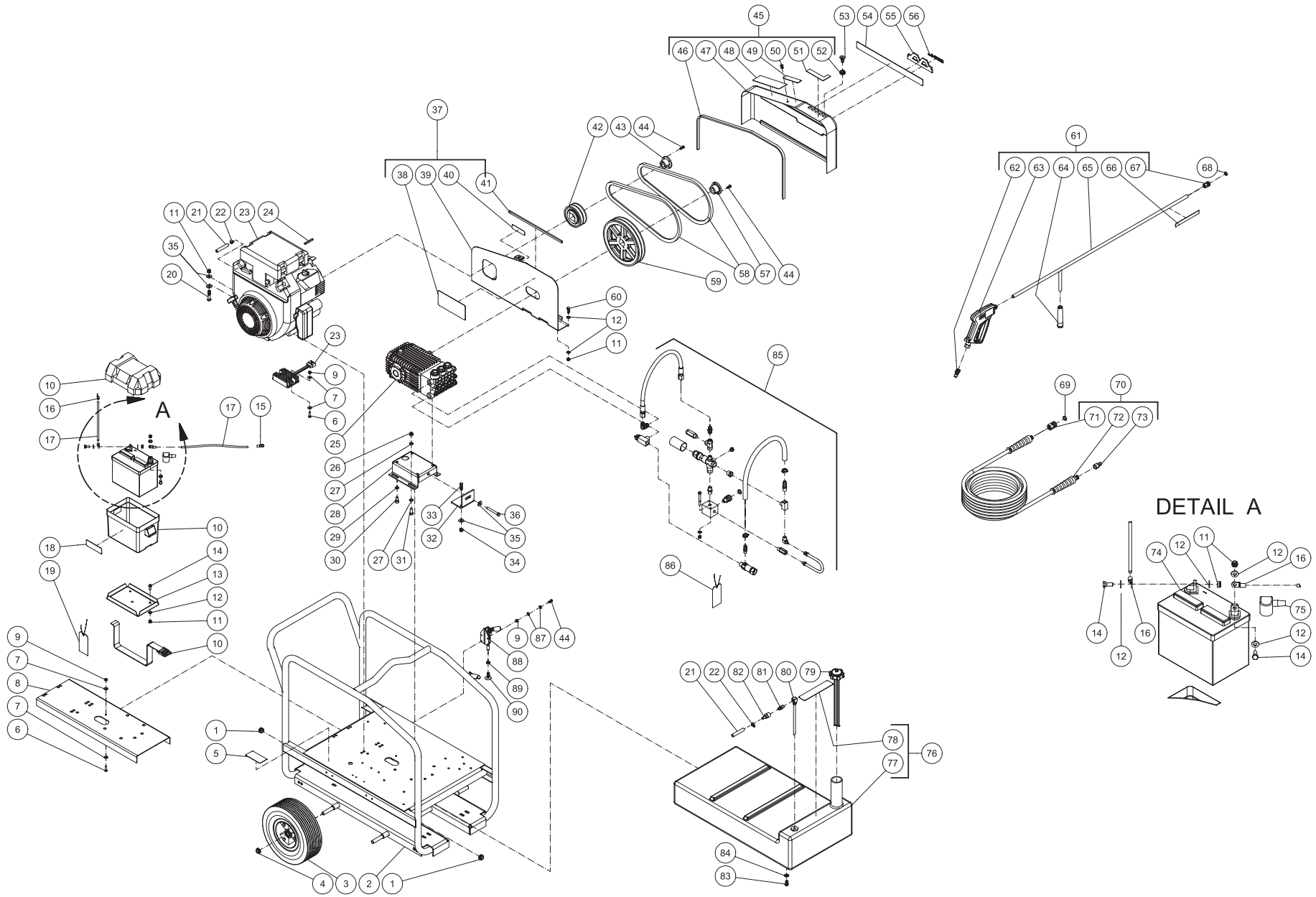


CWC-4005-2MGH-101906-PJH

## FRAME ASSEMBLY FOR CWC-4005-2MGH (AFTER SERIAL #10230792)

REF. #	DESCRIPTION	PART #	QTY.	REF. #	DESCRIPTION	PART #	QTY.	REF. #	DESCRIPTION	PART #	QTY.
1	Grommet	33-0002	2	32	Angle Tightener Bracket	13-0003A01	1	61	Gun and Lance Assembly (Inc. 62-67)	851-0309	1
2	Frame Assembly	5-0136A42	1	33	Bolt	27-0118	2	62	Quick Connect Plug	17-0005	1
3	Wheel	14-0092	4	34	Locknut	30-0159	6	63	Gun	16-0343	1
4	Nut	30-0117	4	35	Flatwasher	28-0023	11	64	Wand Grip	7-0002	1
5	Decal- Data Plate	N/A	1	36	Bolt	27-0576	1	65	Wand w/Handle	16-0342A01	1
6	Bolt	27-0016	3	37	Beltguard Back Assembly (Inc. 38-41)	851-0310	1	66	Decal- Warning: Risk of Injury (See 34-9017)	N/A Sep.	1
7	Washer	28-0021	6	38	Decal- Warning/Caution (See 34-9017)	N/A Sep.	1	67	Quick Connect Socket	17-0036	1
8	Support Bracket	13-0120A01	1	39	Beltguard Back (See 851-0310)	N/A Sep.	1	68	O-ring	25-0122	1
9	Locknut	30-0155	5	40	Decal- Warning: Beltguard in Place (See 34-9017)	N/A Sep.	1	69	O-ring	25-0123	1
10	Battery Box	33-0092	1	41	Edging *(Two Feet Required)	33-0020	1	70	High Pressure Hose (Inc. 71-73)	851-0006	1
11	Locknut	30-0157	8	42	Sheave	10-0125	1	71	Quick Connect Socket	17-0004	1
12	Washer	28-0003	14	43	Bushing	9-0005	1	72	Hose	15-0004	1
13	Battery Retainer	20-0264A01	1	44	Bolt	27-0015	6	73	Quick Connect Plug	17-0006	1
14	Bolt	27-0066	4	45	Beltguard Cover Assembly (Inc. 46-52)	851-0348	1	74	Battery	32-0058	1
15	Terminal	32-0744	1	46	Edging *(Four Feet Required)	33-0020	1	75	Battery Cable Cover	33-0004	1
16	Terminal	32-0097	3	47	Beltguard Cover (See 851-0348)	N/A Sep.	1	76	Fuel Tank Assembly (Inc. 77-78)	851-0319	1
17	Battery Cable *(Two Feet Required) = Neg. 16"	32-0065	1	48	Decal- Operation (See 34-9017)	N/A Sep.	1	77	Fuel Tank (See 851-0319)	N/A Sep.	1
-	Battery Cable *(Two Feet Required) = Pos. 22"	32-0065	1	49	Decal- Warning: Risk of Burns (See 34-9017)	N/A Sep.	1	78	Decal- Caution: Risk of Fire (See 34-9017)	N/A Sep.	1
18	Decal- Caution: Risk of Injury (See 34-9017)	N/A Sep.	1	50	Fastener	33-0197	1	79	Fuel Cap	12-0061	1
19	Tag- Important: Battery	34-0096	1	51	Decal- Nozzles 0, 15, 25, 40	34-0500	1	80	Fuel Pickup	33-0271	1
20	Bolt	27-0121	4	52	Grommet	33-0001	5	81	Quick Connect Plug	17-0038	1
21	Hose *(Four Feet Required)	15-0008	1	53	Nozzle- 0005	18-0003	1	82	Quick Connect Socket	17-0018	1
22	Worm Clamp	42-0004	2	-	Nozzle- 1505	18-0004	1	83	Bolt	27-9524	4
23	Honda Assembly w/ Muffler	851-0307	1	-	Nozzle- 2505	18-0153	1	84	Washer	28-0022	4
24	Key	43-0078	1	-	Nozzle- 4005	18-0180	1	85	Plumbing Assembly (See Exploded Drawing)	N/A Sep.	1
25	Pump	3-0262	1	54	Decal- Stripe	34-0501	1	86	Tag- Water Supply Inlet	34-0097	1
26	Locknut	30-0161	4	55	Decal- Plastic Logo	62-0086	1	87	Washer	28-0002	4
27	Washer	28-0030	8	56	Decal- Die Cut 4005	34-0833	1	88	Push/Pull Toggle Clamp	33-0400	1
28	Pump Bracket	5-0101A01	1	57	Bushing	9-0017	1	89	Hex Nut	30-0004	1
29	Lockwasher	29-0055	4	58	Belt	11-0054	2	90	Bolt	27-9550	1
30	Bolt	27-8471	4	59	Sheave	10-0037	1		Safety Decal Kit (Inc. 18, 38, 40, 48-49, 51, 66, 78)	34-9017	
31	Bolt	27-0167	4	60	Bolt	27-0067	4		*Must Order in One Foot Lengths		

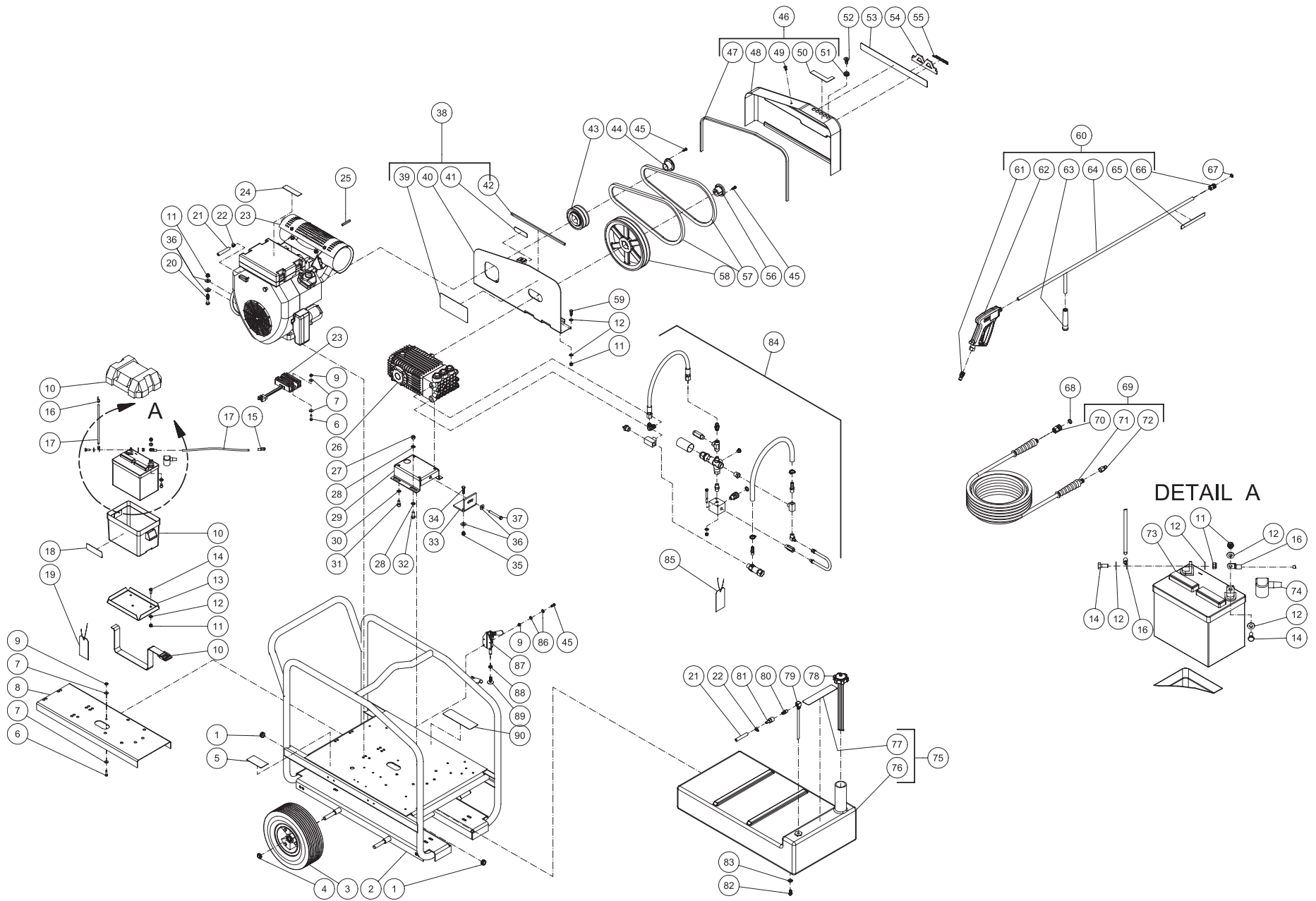
# FRAME ASSEMBLY FOR CWC-5004-2MGH (AFTER SERIAL #10230792)



CWC-5004-2MGH-050206-PJH

FRAME ASSEMBLY FOR CWC-5004-2MGH (AFTER SERIAL #10230792)											
REF. #	DESCRIPTION	PART #	QTY.	REF. #	DESCRIPTION	PART #	QTY.	REF. #	DESCRIPTION	PART #	QTY.
1	Grommet	33-0002	2	32	Angle Tightener Bracket	13-0003A01	1	61	Gun and Lance Assembly (Inc. 62-67)	851-0309	1
2	Frame Assembly	5-0136A42	1	33	Bolt	27-0118	2	62	Quick Connect Plug	17-0005	1
3	Wheel	14-0092	4	34	Locknut	30-0159	6	63	Gun	16-0343	1
4	Nut	30-0117	4	35	Flatwasher	28-0023	11	64	Wand Grip	7-0002	1
5	Decal- Data Plate	N/A	1	36	Bolt	27-0576	1	65	Wand w/Handle	16-0342A01	1
6	Bolt	27-0016	3	37	Beltguard Back Assembly (Inc. 38-41)	851-0310	1	66	Decal- Warning: Risk of Injury (See 34-9017)	N/A Sep.	1
7	Washer	28-0021	6	38	Decal- Warning/Caution (See 34-9017)	N/A Sep.	1	67	Quick Connect Socket	17-0036	1
8	Support Bracket	13-0120A01	1	39	Beltguard Back (See 851-0310)	N/A Sep.	1	68	O-ring	25-0122	1
9	Locknut	30-0155	5	40	Decal- Warning: Beltguard in Place (See 34-9017)	N/A Sep.	1	69	O-ring	25-0123	1
10	Battery Box	33-0092	1	41	Edging *(Two Feet Required)	33-0020	1	70	High Pressure Hose (Inc. 71-73)	851-0317	1
11	Locknut	30-0157	8	42	Sheave	10-0043	1	71	Quick Connect Socket	17-0041	1
12	Washer	28-0003	14	43	Bushing	9-0005	1	72	Hose	15-0178	1
13	Battery Retainer	20-0264A01	1	44	Bolt	27-0015	6	73	Quick Connect Plug	17-0006	1
14	Bolt	27-0066	4	45	Beltguard Cover Assembly (Inc. 46-52)	851-0348	1	74	Battery	32-0058	1
15	Terminal	32-0744	1	46	Edging *(Four Feet Required)	33-0020	1	75	Battery Cable Cover	33-0004	1
16	Terminal	32-0097	3	47	Beltguard Cover (See 851-0348)	N/A Sep.	1	76	Fuel Tank Assembly (Inc. 77-78)	851-0319	1
17	Battery Cable *(Two Feet Required) = Neg. 16"	32-0065	1	48	Decal- Operation (See 34-9017)	N/A Sep.	1	77	Fuel Tank (See 851-0319)	N/A Sep.	1
-	Battery Cable *(Two Feet Required) = Pos. 22"	32-0065	1	49	Decal- Warning: Risk of Burns (See 34-9017)	N/A Sep.	1	78	Decal- Caution: Risk of Fire (See 34-9017)	N/A Sep.	1
18	Decal- Caution: Risk of Injury (See 34-9017)	N/A Sep.	1	50	Fastener	33-0197	1	79	Fuel Cap	12-0061	1
19	Tag- Important: Battery	34-0096	1	51	Decal- Nozzles 0, 15, 25, 40	34-0500	1	80	Fuel Pickup	33-0271	1
20	Bolt	27-0121	4	52	Grommet	33-0001	5	81	Quick Connect Plug	17-0038	1
21	Hose *(Four Feet Required)	15-0008	1	53	Nozzle- 0003.5	18-0257	1	82	Quick Connect Socket	17-0018	1
22	Worm Clamp	42-0004	2	-	Nozzle- 1503.5	18-0258	1	83	Bolt	27-9524	4
23	Honda Assembly w/ Muffler	851-0307	1	-	Nozzle- 2503.5	18-0259	1	84	Washer	28-0022	4
24	Key	43-0078	1	-	Nozzle- 4003.5	18-0260	1	85	Plumbing Assembly (See Exploded Drawing)	N/A Sep.	1
25	Pump	3-0261	1	54	Decal- Stripe	34-0501	1	86	Tag- Water Supply Inlet	34-0097	1
26	Locknut	30-0161	4	55	Decal- Plastic Logo	62-0086	1	87	Washer	28-0002	4
27	Washer	28-0030	8	56	Decal- Die Cut 5004	34-0834	1	88	Push/Pull Toggle Clamp	33-0400	1
28	Pump Bracket	5-0101A01	1	57	Bushing	9-0017	1	89	Hex Nut	30-0004	1
29	Lockwasher	29-0055	4	58	Belt	11-0054	2	90	Bolt	27-9550	1
30	Bolt	27-8471	4	59	Sheave	10-0037	1		Safety Decal Kit (Inc. 17, 38, 40, 48-49, 51, 66, 78)	34-9017	
31	Bolt	27-0167	4	60	Bolt	27-0067	4		*Must Order in One Foot Lengths		

# FRAME ASSEMBLY FOR CWC-5005-2MGH (AFTER SERIAL #10230792)



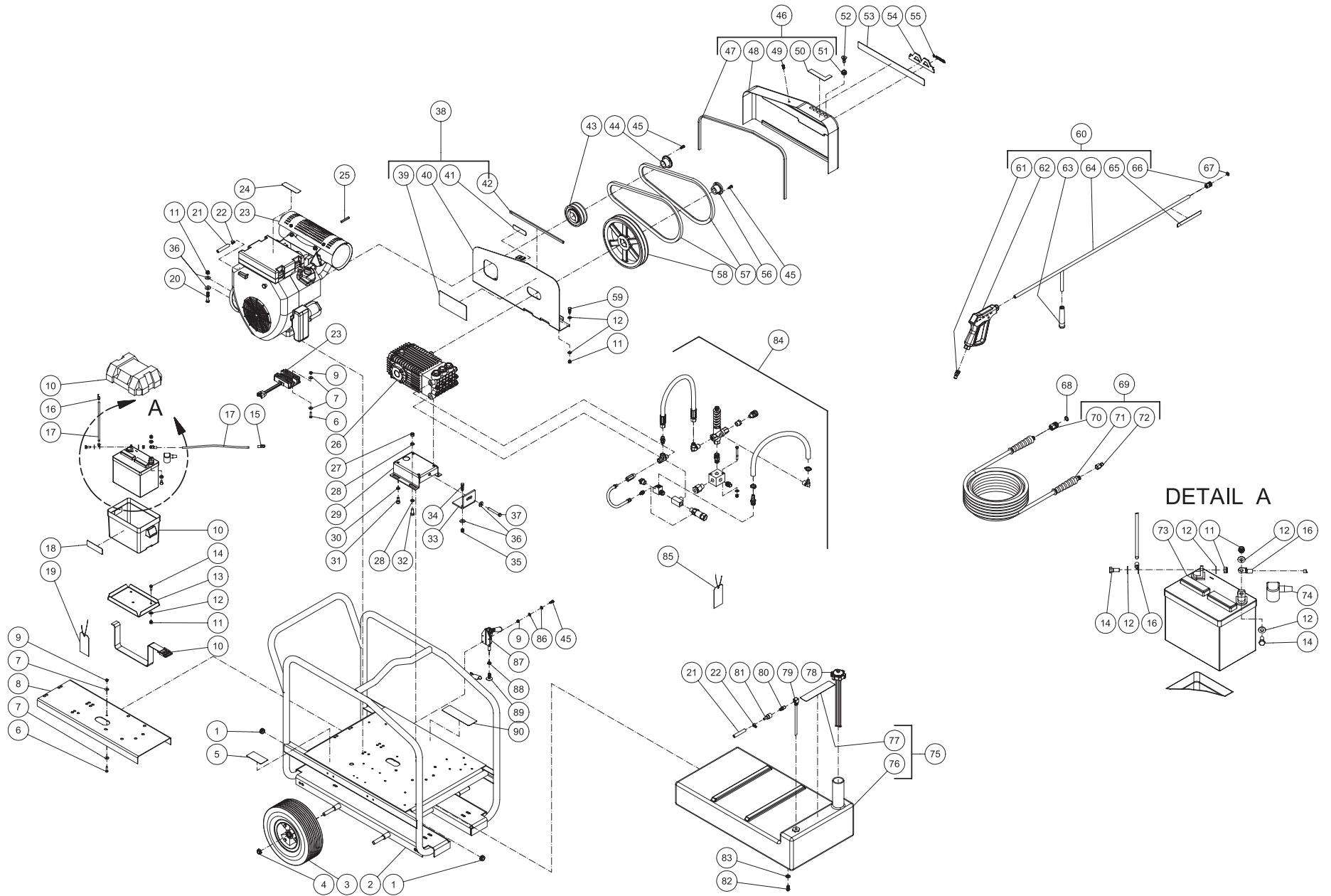
CWC-5005-2MGH-050206-PJH



FRAME ASSEMBLY FOR CWC-5005-2MGH (AFTER SERIAL #10230792)											
REF. #	DESCRIPTION	PART #	QTY.	REF. #	DESCRIPTION	PART #	QTY.	REF. #	DESCRIPTION	PART #	QTY.
1	Grommet	33-0002	2	32	Bolt	27-0167	4	61	Quick Connect Plug	17-0005	1
2	Frame Assembly	5-0136A42	1	33	Angle Tightener Bracket	13-0003A01	1	62	Gun	16-0343	1
3	Wheel	14-0092	4	34	Bolt	27-0118	2	63	Wand Grip	7-0002	1
4	Nut	30-0117	4	35	Locknut	30-0159	6	64	Wand w/Handle	16-0342A01	1
5	Decal- Data Plate	N/A	1	36	Flatwasher	28-0023	11	65	Decal- Warning: Risk of Injury (See 34-9017)	N/A Sep.	1
6	Bolt	27-0016	3	37	Bolt	27-0576	1	66	Quick Connect Socket	17-0036	1
7	Washer	28-0021	6	38	Beltguard Back Assembly (Inc. 39-42)	851-0310	1	67	O-ring	25-0122	1
8	Support Bracket	13-0120A01	1	39	Decal- Warning/Caution (See 34-9017)	N/A Sep.	1	68	O-ring	25-0123	1
9	Locknut	30-0155	5	40	Beltguard Back (See 851-0310)	N/A Sep.	1	69	High Pressure Hose (Inc. 70-72)	851-0317	1
10	Battery Box	33-0092	1	41	Decal- Warning: Beltguard in Place (See 34-9017)	N/A Sep.	1	70	Quick Connect Socket	17-0041	1
11	Locknut	30-0157	8	42	Edging *(Two Feet Required)	33-0020	1	71	Hose	15-0178	1
12	Washer	28-0003	14	43	Sheave	10-0043	1	72	Quick Connect Plug	17-0006	1
13	Battery Retainer	20-0264A01	1	44	Bushing	9-0010	1	73	Battery	32-0058	1
14	Bolt	27-0066	4	45	Bolt	27-0015	6	74	Battery Cable Cover	33-0004	1
15	Terminal	32-0744	1	46	Beltguard Cover Assembly (Inc. 47-51)	851-0348	1	75	Fuel Tank Assembly (Inc. 76-77)	851-0319	1
16	Terminal	32-0097	3	47	Edging *(Four Feet Required)	33-0020	1	76	Fuel Tank (See 851-0319)	N/A Sep.	1
17	Battery Cable *(Two Feet Required) = Neg. 16"	32-0065	1	48	Beltguard Cover (See 851-0348)	N/A Sep.	1	77	Decal- Caution: Risk of Fire (See 34-9017)	N/A Sep.	1
-	Battery Cable *(Two Feet Required) = Pos. 22"	32-0065	1	49	Fastener	33-0197	1	78	Fuel Cap	12-0061	1
18	Decal- Caution: Risk of Injury (See 34-9017)	N/A Sep.	1	50	Decal- Nozzles 0, 15, 25, 40	34-0500	1	79	Fuel Pickup	33-0271	1
19	Tag- Important: Battery	34-0096	1	51	Grommet	33-0001	5	80	Quick Connect Plug	17-0038	1
20	Bolt	27-0121	4	52	Nozzle- 0004	18-0028	1	81	Quick Connect Socket	17-0018	1
21	Hose *(Four Feet Required)	15-0008	1	-	Nozzle- 1504	18-0029	1	82	Bolt	27-9524	4
22	Worm Clamp	42-0004	2	-	Nozzle- 2504	18-0030	1	83	Washer	28-0022	4
23	Honda Assembly	851-0357	1	-	Nozzle- 4004	18-0031	1	84	Plumbing Assembly (See Exploded Drawing)	N/A Sep.	1
24	Decal- Operation (See 34-9017)	N/A Sep.	1	53	Decal- Stripe	34-0501	1	85	Tag- Water Supply Inlet	34-0097	1
25	Key	43-0078	1	54	Decal- Plastic Logo	62-0086	1	86	Washer	28-0002	4
26	Pump	3-0262	1	55	Decal- Die Cut 5005	34-1688	1	87	Push/Pull Toggle Clamp	33-0400	1
27	Locknut	30-0161	4	56	Bushing	9-0017	1	88	Hex Nut	30-0004	1
28	Washer	28-0030	8	57	Belt	11-0068	2	89	Bolt	27-9550	1
29	Pump Bracket	5-0101A01	1	58	Sheave	10-0046	1	90	Decal- Operations (See 34-9017)	N/A Sep.	1
30	Lockwasher	29-0055	4	59	Bolt	27-0067	4		Safety Decal Kit (Inc. 18, 24, 39, 41, 65, 77, 90)	34-9017	
31	Bolt	27-8471	4	60	Gun and Lance Assembly (Inc. 61-66)	851-0309	1				

\*Must Order in One Foot Lengths

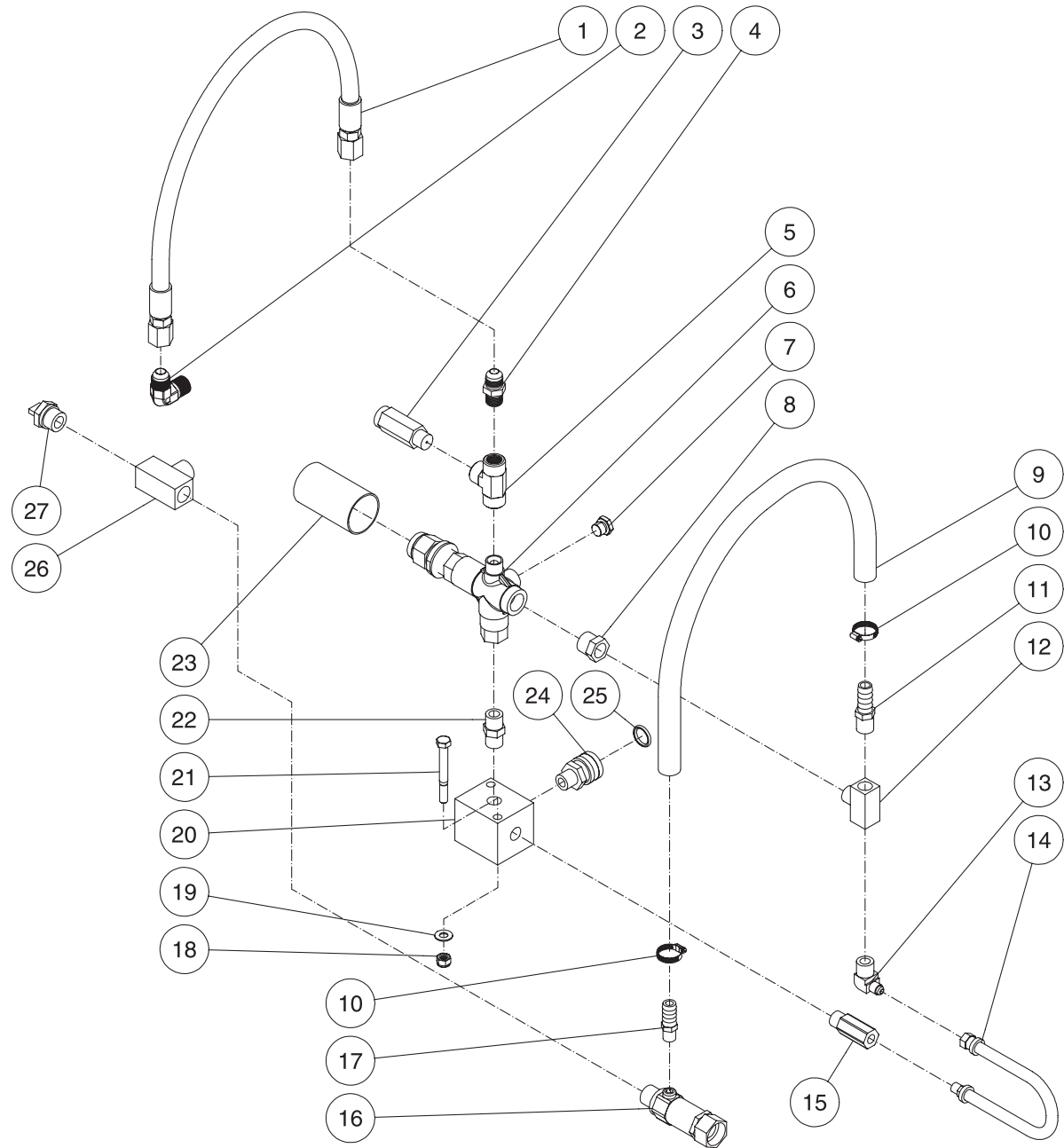
# FRAME ASSEMBLY FOR CWC-6004-2MGH (AFTER SERIAL #10230792)



CWC-6004-2MGH-050206-PJH

FRAME ASSEMBLY FOR CWC-6004-2MGH (AFTER SERIAL #10230792)												
REF. #	DESCRIPTION	PART #	QTY.	REF. #	DESCRIPTION	PART #	QTY.	REF. #	DESCRIPTION	PART #	QTY.	
1	Grommet	33-0002	2	32	Bolt	27-0167	4	61	Quick Connect Plug	17-0005	1	
2	Frame Assembly	5-0136A42	1	33	Angle Tightener Bracket	13-0003A01	1	62	Gun	16-0421	1	
3	Wheel	14-0092	4	34	Bolt	27-0118	2	63	Wand Grip	7-0002	1	
4	Nut	30-0117	4	35	Locknut	30-0159	6	64	Wand w/Handle	16-0342A01	1	
5	Decal- Data Plate	N/A	1	36	Flatwasher	28-0023	11	65	Decal- Warning: Risk of Injury (See 34-9017)	N/A Sep.	1	
6	Bolt	27-0016	3	37	Bolt	27-0576	1	66	Quick Connect Socket	17-0036	1	
7	Washer	28-0021	6	38	Beltguard Back Assembly (Inc. 39-42)	851-0310	1	67	O-ring	25-0122	1	
8	Support Bracket	13-0120A01	1	39	Decal- Warning/Caution (See 34-9017)	N/A Sep.	1	68	O-ring	25-0123	1	
9	Locknut	30-0155	5	40	Beltguard Back (See 851-0310)	N/A Sep.	1	69	High Pressure Hose (Inc. 70-72)	851-0362	1	
10	Battery Box	33-0092	1	41	Decal- Warning: Beltguard in Place (See 34-9017)	N/A Sep.	1	70	Quick Connect Socket	17-0041	1	
11	Locknut	30-0157	8	42	Edging *(Two Feet Required)	33-0020	1	71	Hose	15-0255	1	
12	Washer	28-0003	14	43	Sheave	10-0043	1	72	Quick Connect Plug	17-0006	1	
13	Battery Retainer	20-0264A01	1	44	Bushing	9-0010	1	73	Battery	32-0058	1	
14	Bolt	27-0066	4	45	Bolt	27-0015	6	74	Battery Cable Cover	33-0004	1	
15	Terminal	32-0744	1	46	Beltguard Cover Assembly (Inc. 47-51)	851-0348	1	75	Fuel Tank Assembly (Inc. 76-77)	851-0319	1	
16	Terminal	32-0097	3	47	Edging *(Four Feet Required)	33-0020	1	76	Fuel Tank (See 851-0319)	N/A Sep.	1	
17	Battery Cable *(Two Feet Required) = Neg. 16"	32-0065	1	48	Beltguard Cover (See 851-0348)	N/A Sep.	1	77	Decal- Caution: Risk of Fire (See 34-9017)	N/A Sep.	1	
-	Battery Cable *(Two Feet Required) = Pos. 22"	32-0065	1	49	Fastener	33-0197	1	78	Fuel Cap	12-0061	1	
18	Decal- Caution: Risk of Injury (See 34-9017)	N/A Sep.	1	50	Decal- Nozzles 0, 15, 25, 40	34-0500	1	79	Fuel Pickup	33-0271	1	
19	Tag- Important: Battery	34-0096	1	51	Grommet	33-0001	5	80	Quick Connect Plug	17-0038	1	
20	Bolt	27-0121	4	52	Nozzle- 0003	18-0302	1	81	Quick Connect Socket	17-0018	1	
21	Hose *(Four Feet Required)	15-0008	1	-	Nozzle- 1503	18-0150	1	82	Bolt	27-9524	4	
22	Worm Clamp	42-0004	2	-	Nozzle- 2503	18-0303	1	83	Washer	28-0022	4	
23	Honda Assembly	851-0357	1	-	Nozzle- 4003	18-0304	1	84	Plumbing Assembly (See Exploded Drawing)	N/A Sep.	1	
24	Decal- Operation (See 34-9017)	N/A Sep.	1	53	Decal- Stripe	34-0501	1	85	Tag- Water Supply Inlet	34-0097	1	
25	Key	43-0078	1	54	Decal- Plastic Logo	62-0086	1	86	Washer	28-0002	4	
26	Pump	3-0261	1	55	Decal- Die Cut 6004	34-1728	1	87	Push/Pull Toggle Clamp	33-0400	1	
27	Locknut	30-0161	4	56	Bushing	9-0017	1	88	Hex Nut	30-0004	1	
28	Washer	28-0030	8	57	Belt	11-0068	2	89	Bolt	27-9550	1	
29	Pump Bracket	5-0101A01	1	58	Sheave	10-0046	1	90	Decal- Operations (See 34-9017)	N/A Sep.	1	
30	Lockwasher	29-0055	4	59	Bolt	27-0067	4		Safety Decal Kit (Inc. 18, 24, 39, 41, 65, 77, 90)	34-9017		
31	Bolt	27-8471	4	60	Gun and Lance Assembly (Inc. 61-66)	851-0361	1		*Must Order in One Foot Lengths			

# PLUMBING ASSEMBLY (CWC-4005/5004/5005-2MGH)

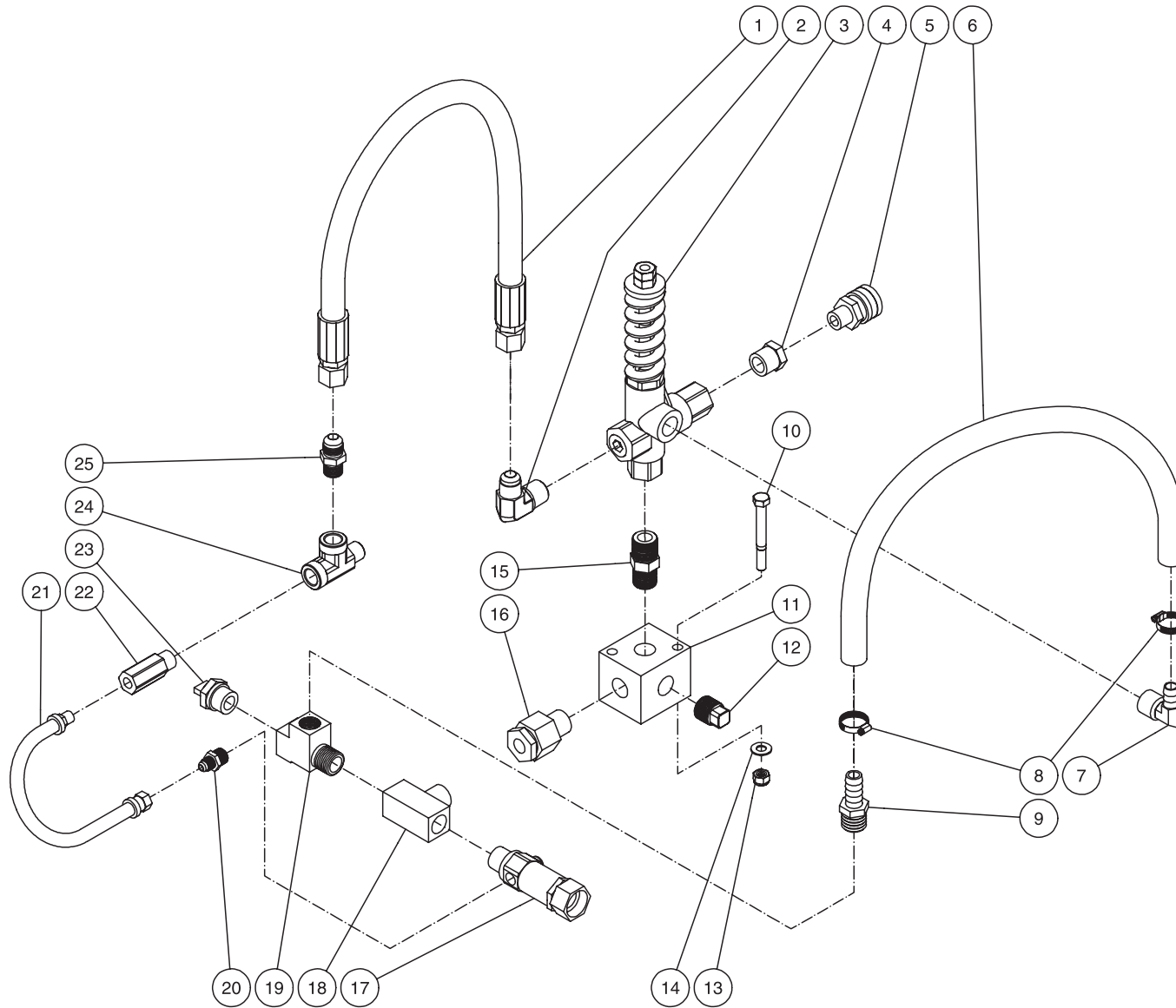


851-0358-060205-JJT

**PLUMBING ASSEMBLY**

REF. #	DESCRIPTION	PART #	QTY.	REF. #	DESCRIPTION	PART #	QTY.
1	Hose	15-0177	1	15	Easy Start Valve	22-0242	1
2	Elbow	24-0092	1	16	Filter	19-0207	1
3	Safety Valve	22-0319	1	17	Hose Barb	23-0120	1
4	Nipple	24-0002	1	18	Locknut	30-0157	2
5	Tee	24-0026	1	19	Washer	28-0003	2
6	Unloader	8-0522	1	20	Manifold Block	51-0020	1
7	Plug	39-0017	1	21	Bolt	27-0074	2
8	Bushing	23-0016	1	22	Nipple	24-0010	1
9	Hose *(Three Feet Required)	15-0007	1	23	Heat Shrink Tubing *(One Foot Required)	33-0272	1
10	Hose Clamp	42-0011	2	24	Quick Connect	17-0042	1
11	Hose Barb	23-0105	1	25	O-ring	25-0123	1
12	Tee	23-0117	1	26	Tee	23-0235	1
13	Elbow	23-0324	1	27	Thermal Relief Valve	22-0005	1
14	Hose	15-0140	1	*Must Order in One Foot Lengths			

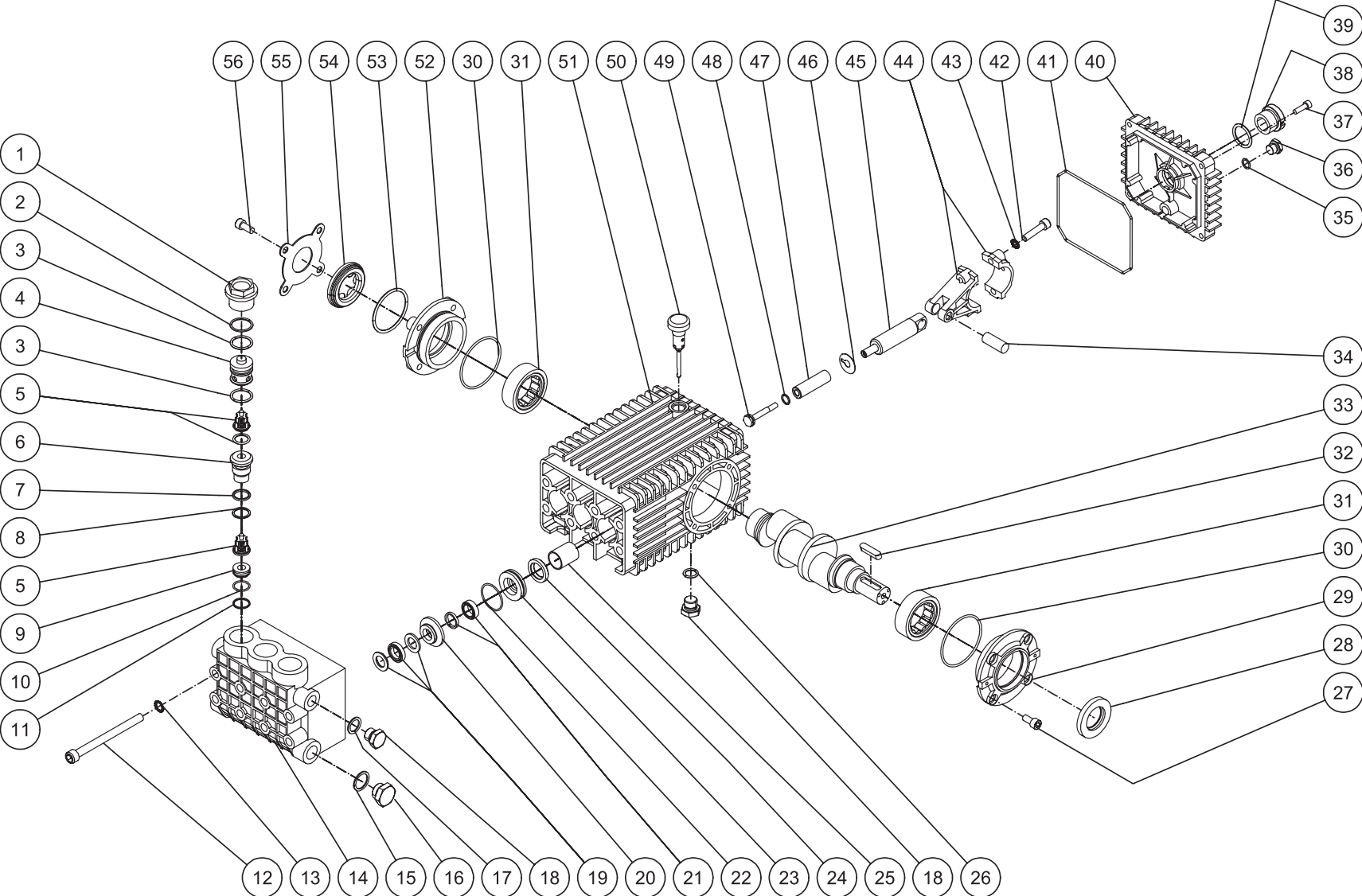
# PLUMBING ASSEMBLY (CWC-6004-2MGH)



851-0360-111705-DLG

PLUMBING ASSEMBLY (CWC-6004-2MGH)							
REF. #	DESCRIPTION	PART #	QTY.	REF. #	DESCRIPTION	PART #	QTY.
1	Hose	15-0254	1	14	Washer	28-0003	2
2	Elbow	24-0074	1	15	Nipple	24-0031	1
3	Unloader	8-0373	1	16	Burst Disc and Holder	22-0217	1
4	Bushing	24-0282	1	17	Filter	19-0207	1
5	Quick Connect	17-0042	1	18	Branch Tee	23-0235	1
6	Hose *(Two Feet Required)	15-0007	1	19	Street Tee	23-0124	1
7	Elbow	23-0418	1	20	Nipple	23-0247	1
8	Hose Clamp	42-0011	2	21	Hose	15-0140	1
9	Hose Barb	23-0045	1	22	Easy Start Valve	22-0242	1
10	Bolt	27-0074	2	23	Thermal Relief Valve	22-0005	1
11	Manifold Block	51-0034	1	24	Street Tee	23-0058	1
12	Plug	39-0016	1	25	Nipple	24-0002	1
13	Locknut	30-0157	2	*Must Order in One Foot Lengths			

# PUMP ASSEMBLY (3-0261)

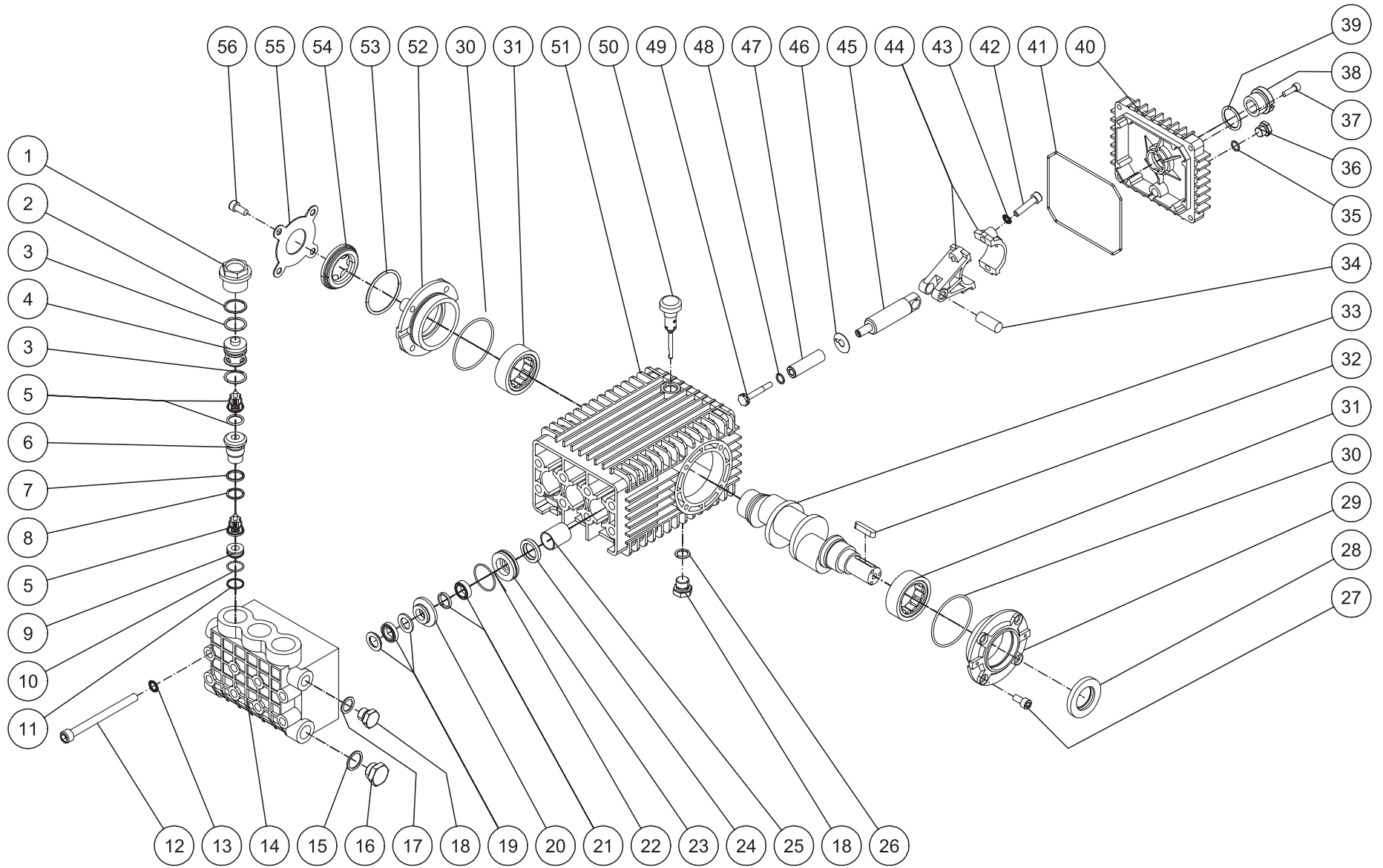


3-0261-122007-JJT



PUMP ASSEMBLY (3-0261)											
REF. #	DESCRIPTION	PART #	QTY.	REF. #	DESCRIPTION	PART #	QTY.	REF. #	DESCRIPTION	PART #	QTY.
1	Valve Plug	46-1203	3	21	Low Pressure Seal (See 70-0434)	N/A Sep.	3	41	O-ring	25-0339	1
2	Backup Ring	25-0592	3	22	O-ring	25-0015	3	42	Bolt	27-8435	6
3	O-ring	25-0139	6	23	Low Pressure Seal Retainer (See 70-0434)	N/A Sep.	3	43	Lockwasher	29-1014	1
4	Cap	46-1206	3	24	Oil Seal	26-0047	3	44	Connecting Rod	46-1211	3
5	Valve Assembly (See 70-0431)	N/A Sep.	6	25	Bushing	9-0029	3	45	Piston Rod	46-1213	3
6	Guide	46-1205	3	26	O-ring	25-0052	1	46	Slinger Washer	46-1214	3
7	O-ring	25-0160	3	27	Bolt	27-8431	4	47	Plunger	46-1215	3
8	Backup Ring	25-0430	3	28	Oil Seal	26-0049	1	48	O-ring	25-0310	3
9	Spacer	46-1204	3	29	Crankcase Open Cover	46-1217	1	49	Bolt	46-1216	3
10	O-ring	25-0130	3	30	O-ring	25-0590	2	50	Oil Dipstick	46-0144	1
11	Backup Ring	25-0591	3	31	Bearing	46-0085	2	51	Crankcase	46-1209	1
12	Bolt	27-8073	8	32	Key	46-0602	1	52	Crankcase Sightglass Cover	46-1208	1
13	Lockwasher	29-0155	8	33	Crankshaft	46-1210	1	53	O-ring	25-0060	1
14	Manifold	46-1202	1	34	Connecting Rod Pin	43-0118	3	54	Sightglass	46-0574	1
15	Washer	28-1038	1	35	O-ring	25-0014	1	55	Sightglass Cover	46-1207	1
16	Hex Plug	39-0019	1	36	Hex Plug	39-0017	1	56	Bolt	27-8433	4
17	Washer	28-1002	1	37	Bolt	27-8812	4		Oil Seal Kit (Inc. 3 each 24)	70-0432	
18	Hex Plug	39-0018	2	38	Sight Glass	46-1163	1		Valve Kit (Inc. 6 each 5)	70-0431	
19	High Pressure Seal Assembly (See 70-0434)	N/A Sep.	3	39	O-ring	25-0059	1		Low/High Pressure Seals (Inc. 3 each 19, 21)	70-0433	
20	High Pressure Intermediate Seal Retainer (See 70-0434)	N/A Sep.	3	40	Crankcase Cover	46-1212	1		Packing Kit (Inc. 1 each 19-23)	70-0434	

# PUMP ASSEMBLY (3-0262)

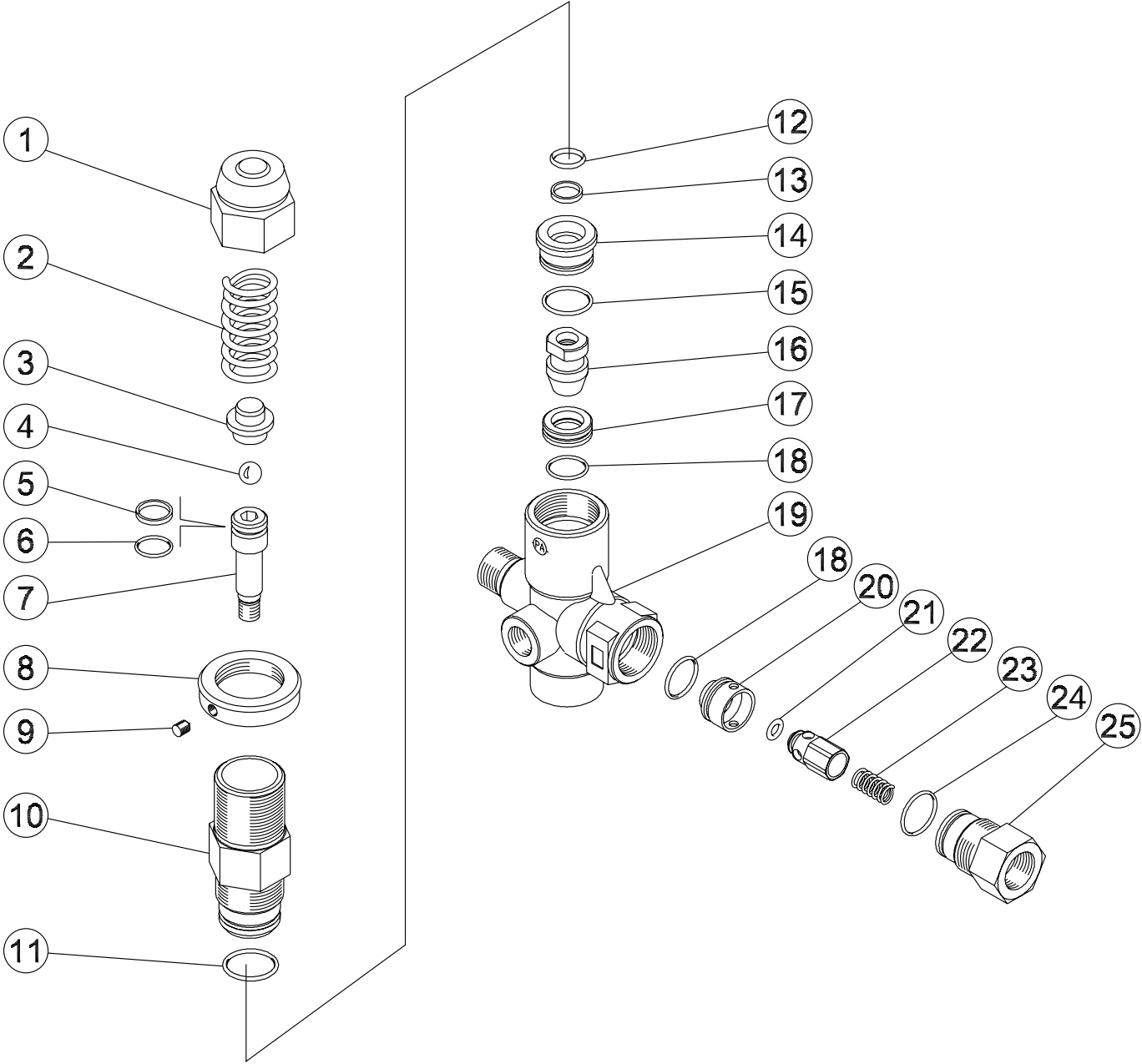


3-0262-122007-JJT

## PUMP ASSEMBLY (3-0262)

REF. #	DESCRIPTION	PART #	QTY.	REF. #	DESCRIPTION	PART #	QTY.	REF. #	DESCRIPTION	PART #	QTY.
1	Valve Plug	46-1203	3	21	Low Pressure Seal (See 70-0435)	N/A Sep.	3	41	O-ring	25-0339	1
2	Backup Ring	25-0592	3	22	O-ring	25-0015	3	42	Bolt	27-8435	6
3	O-ring	25-0139	6	23	Low Pressure Seal Retainer (See 70-0435)	N/A Sep.	3	43	Lockwasher	29-1014	1
4	Cap	46-1206	3	24	Oil Seal	26-0047	3	44	Connecting Rod	46-1211	3
5	Valve Assembly (See 70-0431)	N/A Sep.	6	25	Bushing	9-0029	3	45	Piston Rod	46-1213	3
6	Guide	46-1205	3	26	O-ring	25-0052	1	46	Slinger Washer	46-1214	3
7	O-ring	25-0160	3	27	Bolt	27-8431	4	47	Plunger	46-1219	3
8	Backup Ring	25-0430	3	28	Oil Seal	26-0049	1	48	O-ring	25-0310	3
9	Spacer	46-1204	3	29	Crankcase Open Cover	46-1217	1	49	Bolt	46-1216	3
10	O-ring	25-0130	3	30	O-ring	25-0590	2	50	Oil Dipstick	46-0144	1
11	Backup Ring	25-0591	3	31	Bearing	46-0085	2	51	Crankcase	46-1209	1
12	Bolt	27-8073	8	32	Key	46-0602	1	52	Crankcase Sightglass Cover	46-1208	1
13	Lockwasher	29-0155	8	33	Crankshaft	46-1210	1	53	O-ring	25-0060	1
14	Manifold	46-1218	1	34	Connecting Rod Pin	43-0118	3	54	Sightglass	46-0574	1
15	Washer	28-1038	1	35	O-ring	25-0014	1	55	Sightglass Cover	46-1207	1
16	Hex Plug	39-0019	1	36	Hex Plug	39-0017	1	56	Bolt	27-8433	4
17	Washer	28-1002	1	37	Bolt	27-8812	4		Oil Seal Kit (Inc. 3 each 24)	70-0432	
18	Hex Plug	39-0018	2	38	Sight Glass	46-1163	1		Valve Kit (Inc. 6 each 5)	70-0431	
19	High Pressure Seal Assembly (See 70-0435)	N/A Sep.	3	39	O-ring	25-0059	1		Low/High Pressure Seals (Inc. 3 each 19, 21)	70-0436	
20	High Pressure Intermediate Seal Retainer (See 70-0435)	N/A Sep.	3	40	Crankcase Cover	46-1212	1		Packing Kit (Inc. 3 each 19-23)	70-0435	

UNLOADER ASSEMBLY (8-0522)

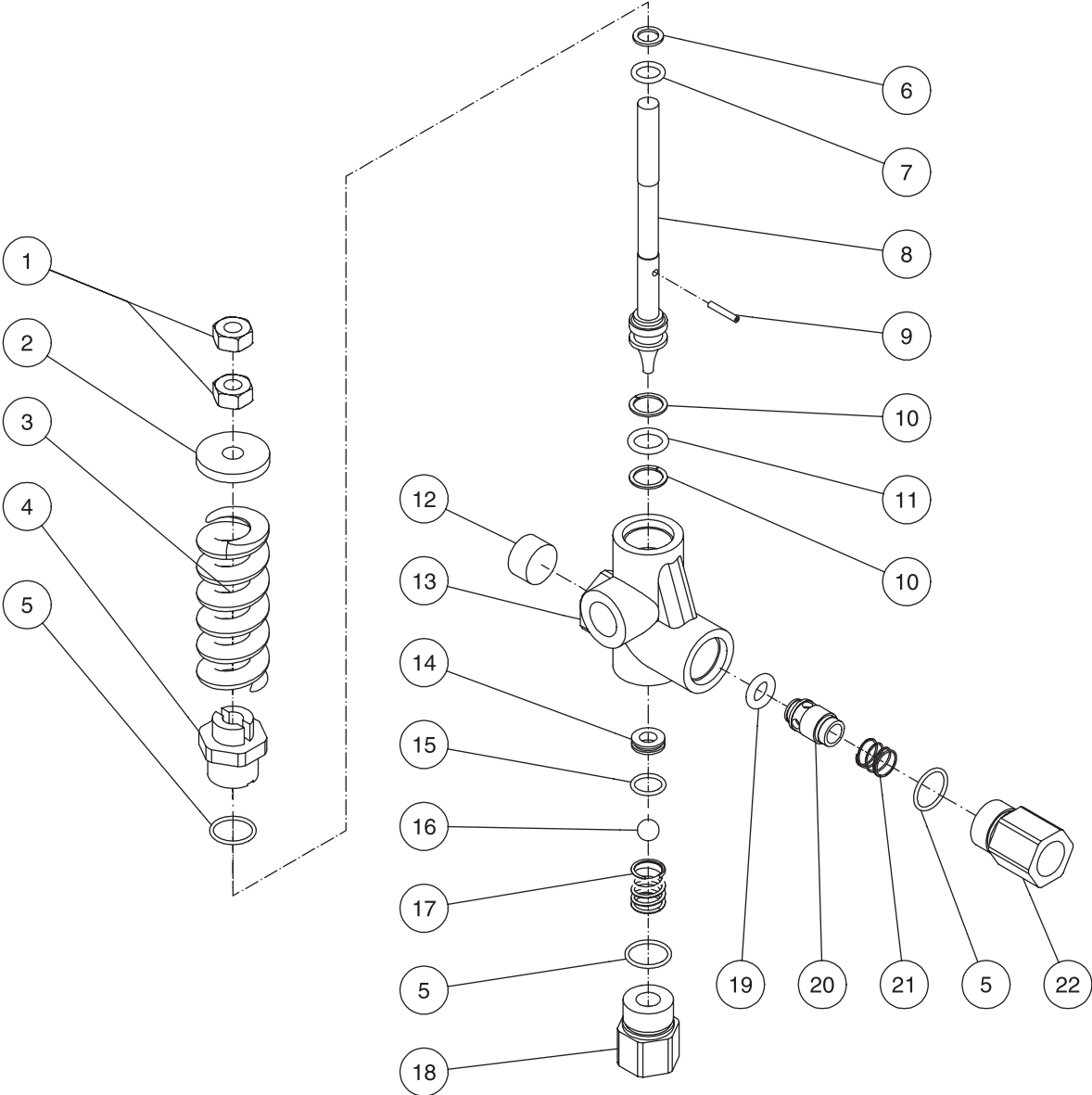


8-0522-120501-RD

## UNLOADER ASSEMBLY (8-0522)

REF. #	DESCRIPTION	PART #	QTY.	REF. #	DESCRIPTION	PART #	QTY.
1	Brass Cap	8-0534	1	15	O-ring	25-0368	1
2	Spring	49-0149	1	16	Shutter	8-0540	1
3	Spring Guide	8-0535	1	17	Seat	8-0541	1
4	Ball	8-0318	1	18	O-ring	25-0220	2
5	Back-up Ring (See 70-0342)	N/A Sep.	1	19	Valve Body	8-0542	1
6	O-ring (See 70-0342)	N/A Sep.	1	20	Check Valve Seat	8-0543	1
7	Piston	8-0536	1	21	O-ring	25-0369	1
8	Lock Ring	8-0537	1	22	Check Valve	8-0486	1
9	Set Screw	8-0408	1	23	Spring	49-0150	1
10	Piston Housing	8-0538	1	24	O-ring	25-0325	1
11	O-ring	25-0189	1	25	Nipple	8-0485	1
12	Back-up Ring (See 70-0343)	N/A Sep.	1		Upper Seal Kit (Inc. 5, 6)	70-0342	1
13	O-ring (See 70-0343)	N/A Sep.	1		Lower Seal Kit (Inc. 12, 13)	70-0343	1
14	Spacer	8-0539	1				

# UNLOADER ASSEMBLY (8-0373)

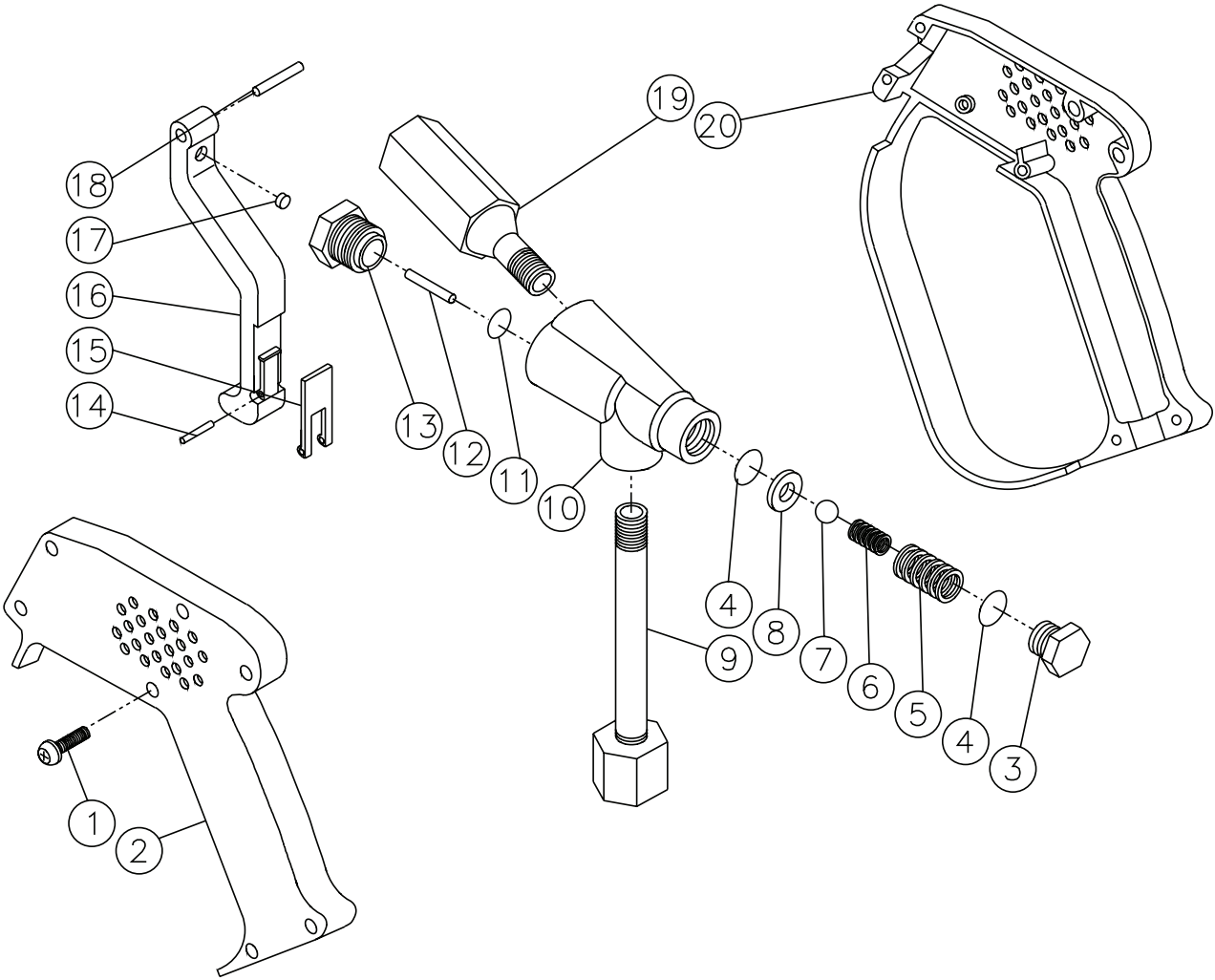


8-0373-090105-IJT

## UNLOADER ASSEMBLY (8-0373)

REF. #	DESCRIPTION	PART #	QTY.	REF. #	DESCRIPTION	PART #	QTY.
1	Hex Nut	30-7203	2	13	Valve Housing	8-0377	1
2	Spring Guide	8-0278	1	14	Seat	8-0272	1
3	Spring	49-0098	1	15	O-ring	25-0190	1
4	Piston Housing	8-0374	1	16	Ball	8-0273	1
5	O-ring	25-0189	3	17	Ball Spring	49-0059	1
6	Back-up Ring	8-0277	1	18	Inlet Connection	8-0379	1
7	O-ring	25-0313	1	19	O-ring	25-0193	1
8	Piston	8-0375	1	20	Check Valve	22-0202	1
9	Pin	43-0059	1	21	Check Valve Spring	49-0058	1
10	Back-up Ring	8-0276	2	22	Outlet Connection	8-0376	1
11	O-ring	25-0314	1		Unloader Repair Kit (Inc. 5-7, 10, 11, 14, 16, 19)	8-0380	
12	Plug	39-0070	1		Complete Unloader (Inc. 1-22)	8-0373	

# GUN ASSEMBLY (16-0343)



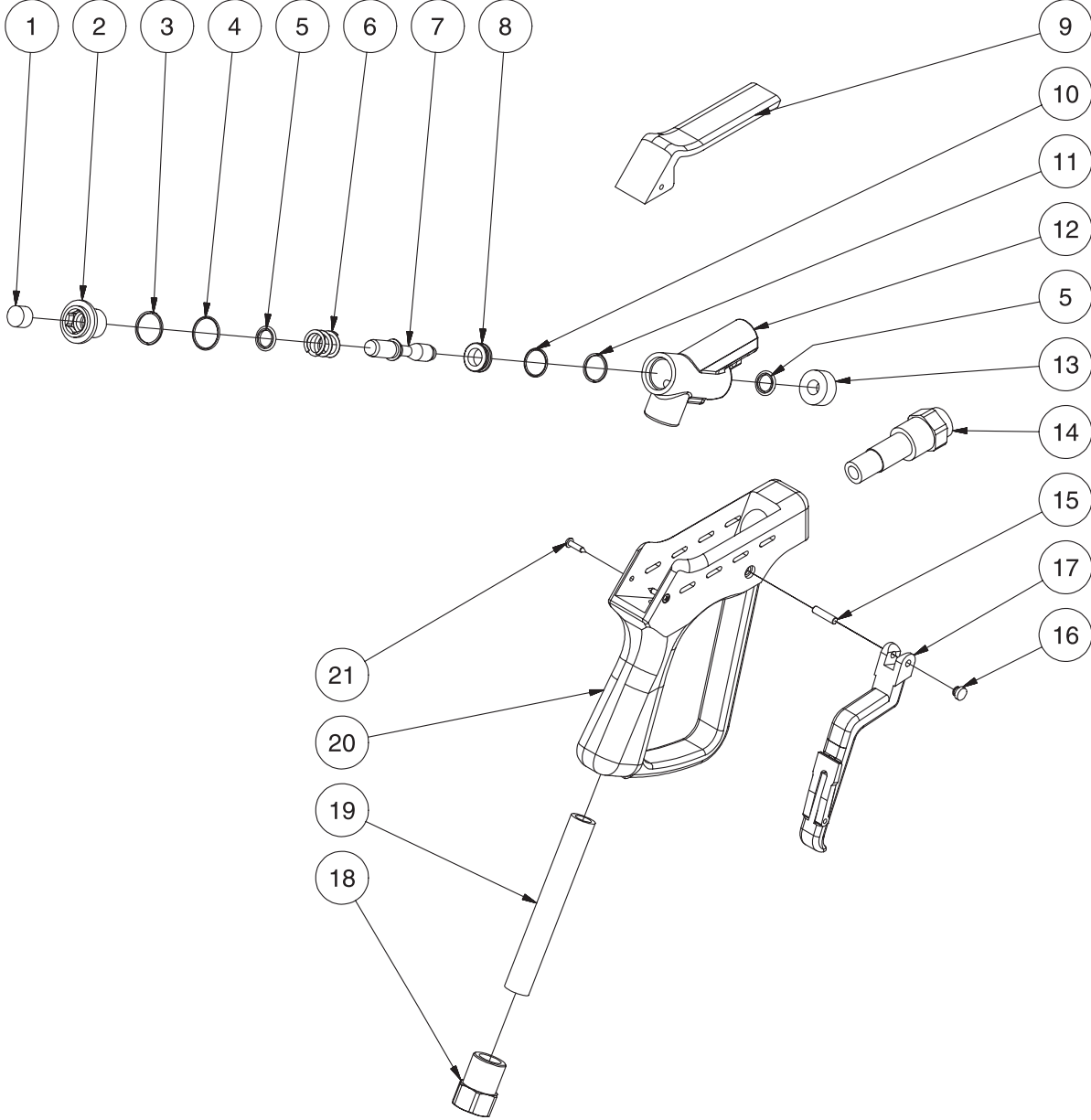
16-0343-042800-RD



## GUN ASSEMBLY (16-0343)

REF. #	DESCRIPTION	PART #	QTY.	REF. #	DESCRIPTION	PART #	QTY.
1	Screw	27-8851	7	12	Control Pin (See 70-0213)	N/A Sep.	1
2	Housing- Left Side	16-0344	1	13	Guide Sleeve	16-0048	1
3	Cap	23-0336	1	14	Lock Pin	43-0025	1
4	O-ring (See 70-0213)	N/A Sep.	2	15	Safety Lock	16-0347	1
5	Spring (See 70-0213)	N/A Sep.	1	16	Trigger	16-0348	1
6	Valve Spring (See 70-0213)	N/A Sep.	1	17	Cam Trigger (See 70-0213)	N/A Sep.	1
7	Valve Ball (See 70-0213)	N/A Sep.	1	18	Pin	43-0024	1
8	Valve Seat (See 70-0213)	N/A Sep.	1	19	Discharge Tube Assembly	16-0349	1
9	Inlet Tube Assembly	16-0345	1	20	Housing- Right Side	16-0350	1
10	Valve Body	16-0346	1		Repair Kit (Inc. 4-8, 11, 12, 17)	70-0213	
11	O-ring (See 70-0213)	N/A Sep.	1				

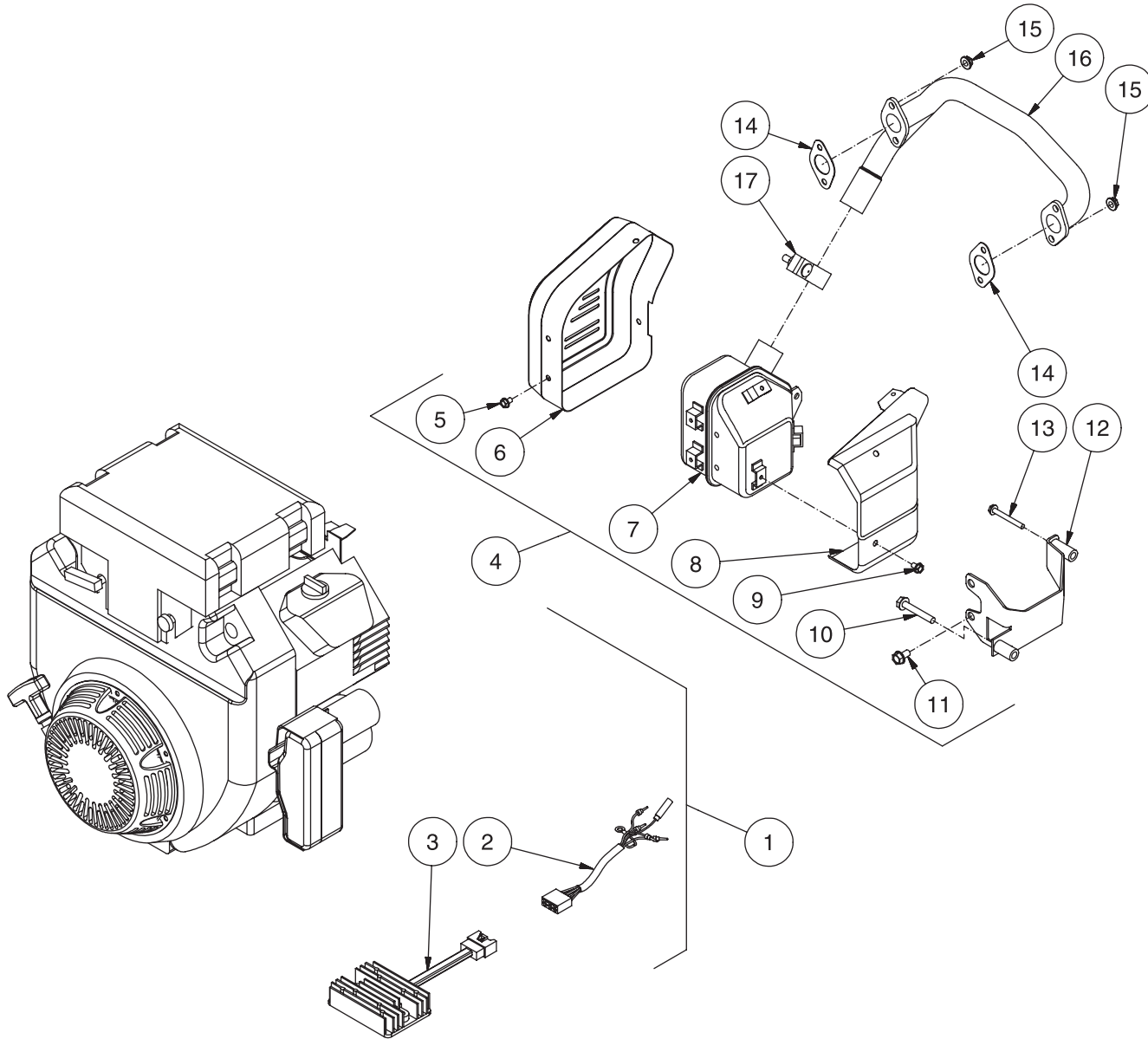
**GUN ASSEMBLY (16-0421)**



16-0421-062205-ASY

GUN ASSEMBLY (16-0421)							
REF. #	DESCRIPTION	PART #	QTY.	REF. #	DESCRIPTION	PART #	QTY.
1	Foam Pad (See 70-0437)	N/A Sep.	1	13	Flat Ring Seal (See 70-0437)	N/A Sep.	1
2	Screw Plug (See 16-0421)	N/A Sep.	1	14	Outlet	16-0423	1
3	Back Ring (See 70-0437)	N/A Sep.	1	15	Pin	16-0063	1
4	O-ring (See 70-0437)	N/A Sep.	1	16	Plastic Plug	N/A Sep.	2
5	O-ring (See 70-0437)	N/A Sep.	2	17	Trigger	16-0422	1
6	Spring (See 70-0437)	N/A Sep.	1	18	Inlet	16-0424	1
7	Valve Cone	16-0427	1	19	Inlet Pipe	16-0425	1
8	Valve Seat (See 70-0437)	N/A Sep.	1	20	Plastic Housing (See 16-0421)	N/A Sep.	1
9	Plastic Cover	16-0426	1	21	Bolt	27-3230	2
10	O-ring (See 70-0437)	N/A Sep.	1		Repair Kit (Inc. 1, 3-6, 8, 10, 11, 13)	70-0437	
11	Back Ring (See 70-0437)	N/A Sep.	1		Complete Gun Assembly (Inc. 1-21)	16-0421	
12	Housing (See 16-0421)	N/A Sep.	1				

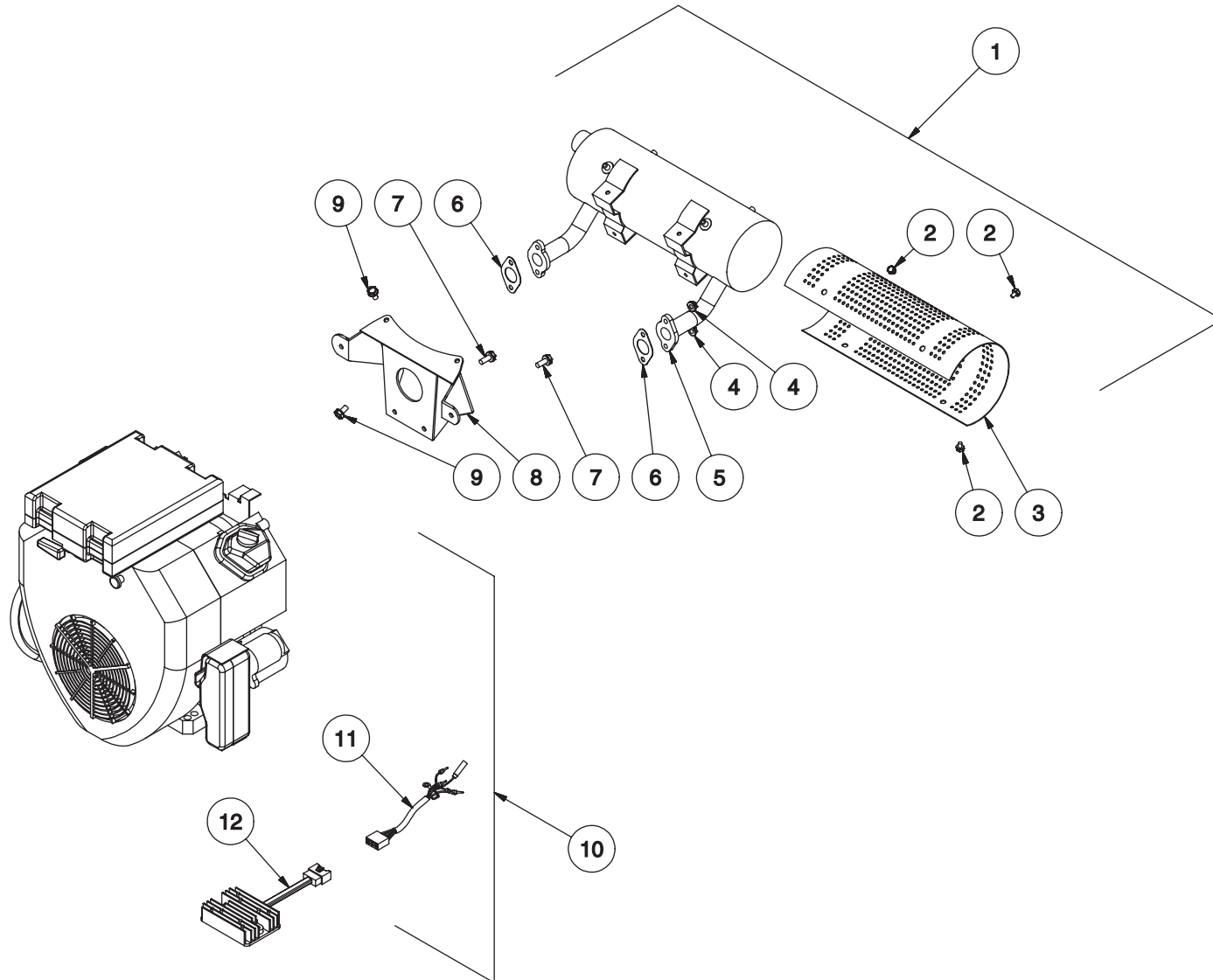
# HONDA ENGINE ASSEMBLY (851-0307)



851-0307-080505-JJT

<b>HONDA ENGINE ASSEMBLY (851-0307)</b>			
<b>REF. #</b>	<b>DESCRIPTION</b>	<b>PART #</b>	<b>QTY.</b>
1	Engine-20 HP (Inc. 2, 3, 14, 15)	1-0102	1
2	Wire Harness (See 1-0102)	N/A Sep.	1
3	Voltage Rectifier Assembly (See 1-0102)	N/A Sep.	1
4	Muffler Assembly (Inc. 5-13, 16, 17)	45-0078	1
5	Screw (See 45-0078)	N/A Sep.	4
6	Outer Muffler Protector (See 45-0078)	N/A Sep.	1
7	Side Mount Muffler (See 45-0078)	N/A Sep.	1
8	Inner Muffler Protector (See 45-0078)	N/A Sep.	1
9	Flange Bolt (See 45-0078)	N/A Sep.	3
10	Flange Bolt (See 45-0078)	N/A Sep.	1
11	Flange Bolt (See 45-0078)	N/A Sep.	2
12	Muffler Stay (See 45-0078)	N/A Sep.	1
13	Flange Bolt (See 45-0078)	N/A Sep.	1
14	Exhaust Gasket (See 1-0102)	N/A Sep.	2
15	Flange Nut (See 1-0102)	N/A Sep.	4
16	Exhaust Pipe - Oil Filter Side (See 45-0078)	N/A Sep.	1
17	Exhaust Pipe Band (See 45-0078)	N/A Sep.	1

# HONDA ENGINE ASSEMBLY (851-0357)



851-0357-060705-JJT

<b>HONDA ENGINE ASSEMBLY (851-0357)</b>			
<b>REF. #</b>	<b>DESCRIPTION</b>	<b>PART #</b>	<b>QTY.</b>
1	Muffler Assembly (Inc. 2, 3, 5, 7-9)	45-0109	1
2	Flange Nut (See 45-0109)	N/A Sep.	6
3	Muffler Protector (See 45-0109)	N/A Sep.	1
4	Flange Nut (See 1-0160)	N/A Sep.	4
5	High Mount Muffler (See 45-0109)	N/A Sep.	1
6	Exhaust Gasket (See 1-0160)	N/A Sep.	2
7	Flange Bolt (See 45-0109)	N/A Sep.	4
8	Muffler Stay (See 45-0109)	N/A Sep.	1
9	Flange Bolt (See 45-0109)	N/A Sep.	4
10	Engine- 24 HP Honda (Inc. 4, 6, 11, 12)	1-0160	1
11	Wire Harness (See 1-0160)	N/A Sep.	1
12	Voltage Rectifier Assembly (See 1-0160)	N/A Sep.	1

Manufactured by Mi-T-M  
8650 Enterprise Drive, Peosta IA 52068  
563-556-7484/ Fax 563-556-1235